

GQ Series Indicators

Mounting Hole Diameter: 6/8/10/12/14/16/19/22/25mm
 Body Material: Nickel Plated Brass / Stainless Steel / Black Plated Brass
 Terminal: Screw Terminals / Wire Leads 150mm / Solder Lug
 Lens Shape: Domed / Flat Round
 IP Degree: IP67
 Lens shape and mounting hole size can be customized



Part Number Description

GQ★■□ /◆/△/▲/◎

Symbol	Indication	Descriptions
★	Mounting Hole Diameter	6: Φ6mm / 8: Φ8mm / 10: Φ10mm / 12: Φ12mm / 14: Φ14mm / 16: Φ16mm / 19: Φ19mm / 22: Φ22mm / 25: Φ25mm
■	Lens Shape	G: Domed / T: Flat Round Type1 / F: Flat Round Type2
□	Illumination Type	D: Steady light / SD: Flashing Light (Customized)
◆	Terminal	L: Screw Terminals / Y: Wire Leads 150mm / No letter means solder lug
△	Lamp Color	R: Red / G: Green / Y: Yellow / B: Blue / W: White
▲	Lamp Voltage	6V,12V,24V,110V (With external resistor), 220V (With external resistor Rated Voltage for flashing light: 6~24V)
◎	Body Material	N: Nickel Plated Brass / S: Stainless Steel / A: Black Plated Brass

Performance characteristics

Operating Temperature	-25 °C~+55 °C(no freezing), Keep air flowing around the indicator
Operating Humidity	45~85%RH (no condensation)
Insulation Resistance	≥100MΩ(500VDC)
Dielectric Strength	1500V RMS 50Hz 1 minute
Vibration Resistance	50Hz, 1.2mm amplitude
Soldering Temperature	320°C 3 seconds
Standard	GB/T 14048.5-2017

Flashing Light Rating

Rated Voltage	Rated Current	Frequency
6~24V	20mA	160 flashes per minute(Other frequency can be customized)

Lamp Ratings

LED Life	Rated Current	Voltage Fluctuation	Diagram
40000 hours	24V approx. 15mA 110V approx. 2mA	DC: ±10% AC: ±20%	<p>With built-in resistor; AC/DC Lamp; No difference of anode or cathode. External resistor is need for voltage 110V (Φ6-14mm indicators)</p>



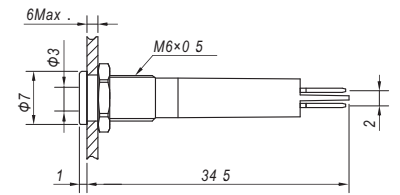
Nickel Plated Brass
GQ6T-D/△/▲ /N



Stainless Steel
GQ6T-D/△/▲ /S



Black Plated Brass
GQ6T-D/△/▲ /A



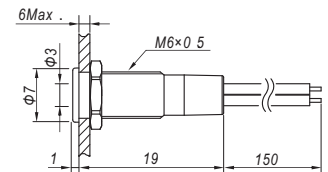
Nickel Plated Brass
GQ6T-D/Y/△/▲ /N



Stainless Steel
GQ6T-D/Y/△/▲ /S



Black Plated Brass
GQ6T-D/Y/△/▲ /A



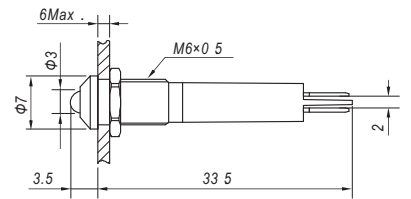
Nickel Plated Brass
GQ6G-D/△/▲ /N



Stainless Steel
GQ6G-D/△/▲ /S



Black Plated Brass
GQ6G-D/△/▲ /A



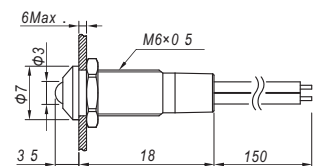
Nickel Plated Brass
GQ6G-D/Y/△/▲ /N



Stainless Steel
GQ6G-D/Y/△/▲ /S



Black Plated Brass
GQ6G-D/Y/△/▲ /A



- ⊙ Lamp Color(△): **R G Y B W**
- ⊙ Lamp Voltage(▲): 6V, 12V, 24V, 110V(with external resistor), 220V(with external resistor)

GQ6 Indicator Specifications

- ⊙ Mounting Hole Diameter: $\Phi 6\text{mm}$
- ⊙ Lamp type: LED
- ⊙ Rated Current: 2mA~20mA
- ⊙ Mounting Nut Torque: About 0.1Nm
- ⊙ Panel Thickness: 6mm Max.
- ⊙ Terminal: Solder Lug (2.8x0.5mm) / Wire Leads 150mm
- ⊙ Soldering Temperature: 320°C 3s

- ⊙ Body Material: Nickel Plated Brass / Black plated Brass / Stainless Steel
- ⊙ Lens Material: Epoxy(UV resistant can be customized)
- ⊙ Base: PA
- ⊙ IP Rating: IP67; IK06(Flat round type only)
- ⊙ RoHS can be Customized



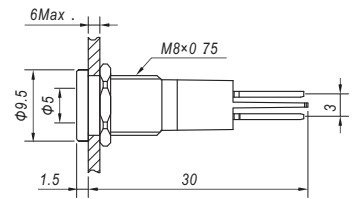
Nickel Plated Brass
GQ8T-D/Δ/▲/N



Stainless Steel
GQ8T-D/Δ/▲/S



Black Plated Brass
GQ8T-D/Δ/▲/A



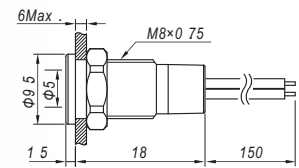
Nickel Plated Brass
GQ8T-D/Y/Δ/▲/N



Stainless Steel
GQ8T-D/Y/Δ/▲/S



Black Plated Brass
GQ8T-D/Y/Δ/▲/A



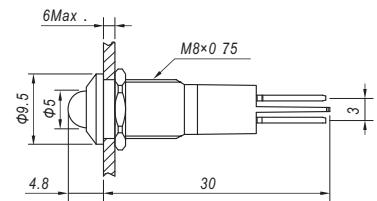
Nickel Plated Brass
GQ8G-D/Δ/▲/N



Stainless Steel
GQ8G-D/Δ/▲/S



Black Plated Brass
GQ8G-D/Δ/▲/A



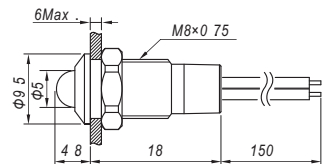
Nickel Plated Brass
GQ8G-D/Y/Δ/▲/N



Stainless Steel
GQ8G-D/Y/Δ/▲/S



Black Plated Brass
GQ8G-D/Y/Δ/▲/A



- ◎ Lamp Color(Δ): **R G Y B W**
- ◎ Lamp Voltage(▲): 6V, 12V, 24V, 110V(with external resistor), 220V(with external resistor)

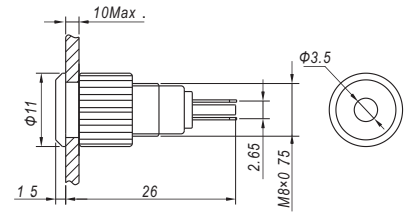
GQ8 Indicator Specifications

- ◎ Mounting Hole Diameter: Φ8mm
- ◎ Lamp type: LED
- ◎ Rated Current: 2mA~20mA
- ◎ Mounting Nut Torque: About 0.1Nm
- ◎ Panel Thickness: 6mm Max.
- ◎ Terminal: Solder Lug (2.8x0.5mm) / Wire Leads 150mm
- ◎ Soldering Temperature: 320°C 3s

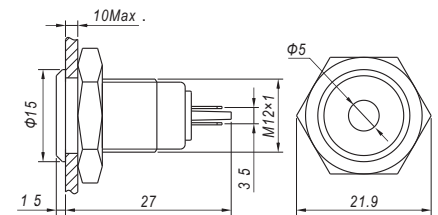
- ◎ Body Material: Nickel Plated Brass / Black plated Brass / Stainless Steel
- ◎ Lens Material: Epoxy(UV resistant can be customized)
- ◎ Base: PA
- ◎ IP Rating: IP67; IK06(Flat round type only)
- ◎ RoHS can be Customized



Nickel Plated Brass
GQ8F-D/△/▲/N



Nickel Plated Brass
GQ12F-D/△/▲/N



- ⊙ Lamp Color(△): **R G Y B W**
- ⊙ Lamp Voltage(▲): 6V, 12V, 24V, 110V(with external resistor), 220V(with external resistor)
- ⊙ Mounting Hole Diameter: Φ8, Φ12mm
- ⊙ Lamp type: LED
- ⊙ Rated Current: 2mA~20mA
- ⊙ Mounting Nut Torque: About 0.1Nm
- ⊙ Panel Thickness: 10mm Max.
- ⊙ Terminal: Solder Lug (2.8x0.5mm)
- ⊙ Soldering Temperature: 320°C 3s
- ⊙ Body Material: Nickel Plated Brass
- ⊙ Base: PBT
- ⊙ IP Rating: IP67; IK06(Flat round type only)
- ⊙ RoHS can be Customized

GQ8,GQ12 Indicator Specifications



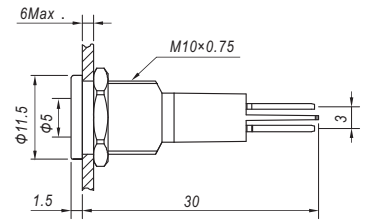
Nickel Plated Brass
GQ10T-D/Δ/▲/N



Stainless Steel
GQ10T-D/Δ/▲/S



Black Plated Brass
GQ10T-D/Δ/▲/A



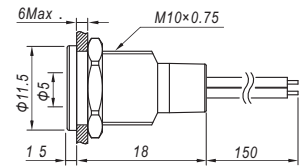
Nickel Plated Brass
GQ10T-D/Y/Δ/▲/N



Stainless Steel
GQ10T-D/Y/Δ/▲/S



Black Plated Brass
GQ10T-D/Y/Δ/▲/A



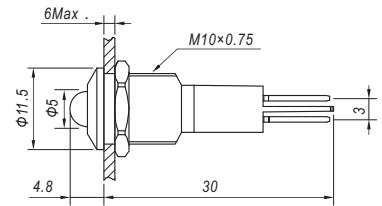
Nickel Plated Brass
GQ10G-D/Δ/▲/N



Stainless Steel
GQ10G-D/Δ/▲/S



Black Plated Brass
GQ10G-D/Δ/▲/A



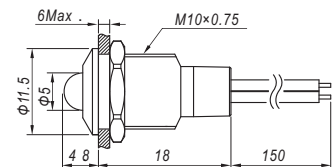
Nickel Plated Brass
GQ10G-D/Y/Δ/▲/N



Stainless Steel
GQ10G-D/Y/Δ/▲/S



Black Plated Brass
GQ10G-D/Y/Δ/▲/A



- ⊙ Lamp Color(Δ): R G Y B W
- ⊙ Lamp Voltage(▲): 6V, 12V, 24V, 110V(with external resistor), 220V(with external resistor)

GQ10 Indicator Specifications

- ⊙ Mounting Hole Diameter: Φ10mm
- ⊙ Lamp type: LED
- ⊙ Rated Current: 2mA~20mA
- ⊙ Mounting Nut Torque: About 0.1Nm
- ⊙ Panel Thickness: 6mm Max.
- ⊙ Terminal: Solder Lug (2.8x0.5mm) / Wire Leads 150mm
- ⊙ Soldering Temperature: 320°C 3s

- ⊙ Body Material: Nickel Plated Brass / Black plated Brass / Stainless Steel
- ⊙ Lens Material: Epoxy(UV resistant can be customized)
- ⊙ Base: PA
- ⊙ IP Rating: IP67; IK06(Flat round type only)
- ⊙ RoHS can be Customized



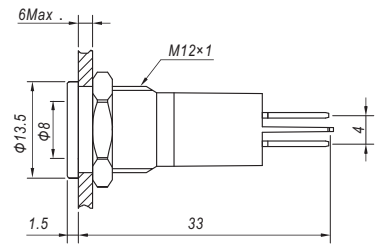
Nickel Plated Brass
GQ12T-D/Δ/▲/N



Stainless Steel
GQ12T-D/Δ/▲/S



Black Plated Brass
GQ12T-D/Δ/▲/A



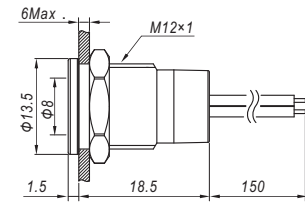
Nickel Plated Brass
GQ12T-D/Y/Δ/▲/N



Stainless Steel
GQ12T-D/Y/Δ/▲/S



Black Plated Brass
GQ12T-D/Y/Δ/▲/A



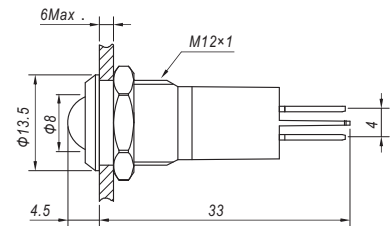
Nickel Plated Brass
GQ12G-D/Δ/▲/N



Stainless Steel
GQ12G-D/Δ/▲/S



Black Plated Brass
GQ12G-D/Δ/▲/A



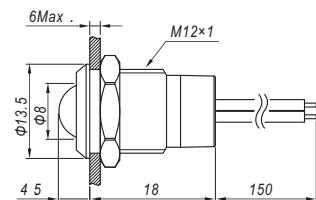
Nickel Plated Brass
GQ12G-D/Y/Δ/▲/N



Stainless Steel
GQ12G-D/Y/Δ/▲/S



Black Plated Brass
GQ12G-D/Y/Δ/▲/A



- ⊙ Lamp Color(Δ): **R** **G** **Y** **B** **W**
- ⊙ Lamp Voltage(▲): 6V, 12V, 24V, 110V(with external resistor), 220V(with external resistor)

GQ12 Indicator Specifications

- ⊙ Mounting Hole Diameter: Φ12mm
- ⊙ Lamp type: LED
- ⊙ Rated Current: 2mA~20mA
- ⊙ Mounting Nut Torque: About 0.1Nm
- ⊙ Panel Thickness: 6mm Max.
- ⊙ Terminal: Solder Lug (2.8x0.5mm) / Wire Leads 150mm
- ⊙ Soldering Temperature: 320°C 3s

- ⊙ Body Material: Nickel Plated Brass / Black plated Brass / Stainless Steel
- ⊙ Lens Material: Epoxy(UV resistant can be customized)
- ⊙ Base: PA
- ⊙ IP Rating: IP67; IK06(Flat round type only)
- ⊙ RoHS can be Customized



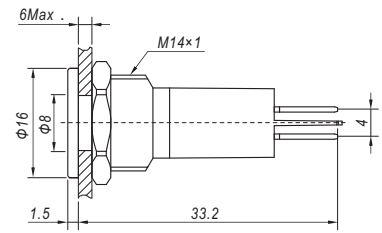
Nickel Plated Brass
GQ14T-D/Δ/▲/N



Stainless Steel
GQ14T-D/Δ/▲/S



Black Plated Brass
GQ14T-D/Δ/▲/A



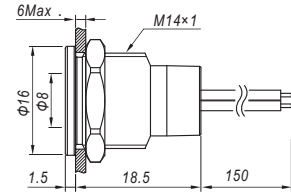
Nickel Plated Brass
GQ14T-D/Y/Δ/▲/N



Stainless Steel
GQ14T-D/Y/Δ/▲/S



Black Plated Brass
GQ14T-D/Y/Δ/▲/A



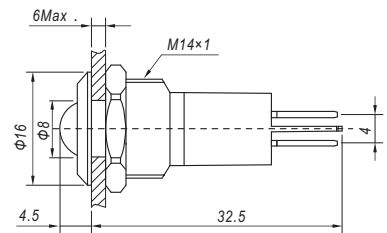
Nickel Plated Brass
GQ14G-D/Δ/▲/N



Stainless Steel
GQ14G-D/Δ/▲/S



Black Plated Brass
GQ14G-D/Δ/▲/A



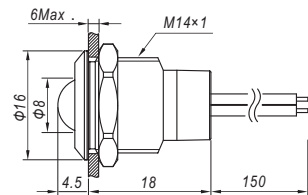
Nickel Plated Brass
GQ14G-D/Y/Δ/▲/N



Stainless Steel
GQ14G-D/Y/Δ/▲/S



Black Plated Brass
GQ14G-D/Y/Δ/▲/A



- ⊙ Lamp Color(Δ): **R** **G** **Y** **B** **W**
- ⊙ Lamp Voltage(▲): 6V, 12V, 24V, 110V(with external resistor), 220V(with external resistor)

GQ14 Indicator Specifications

- ⊙ Mounting Hole Diameter: Φ14mm
- ⊙ Lamp type: LED
- ⊙ Rated Current: 2mA~20mA
- ⊙ Mounting Nut Torque: About 0.1Nm
- ⊙ Panel Thickness: 6mm Max.
- ⊙ Terminal: Solder Lug (2.8x0.5mm) / Wire Leads 150mm
- ⊙ Soldering Temperature: 320°C 3s

- ⊙ Body Material: Nickel Plated Brass / Black plated Brass / Stainless Steel
- ⊙ Lens Material: Epoxy(UV resistant can be customized)
- ⊙ Base: PA
- ⊙ IP Rating: IP67; IK06(Flat round type only)
- ⊙ RoHS can be Customized



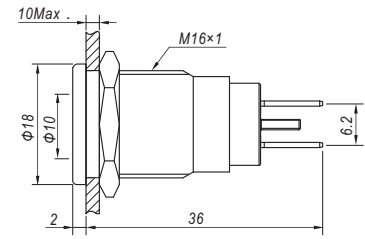
Nickel Plated Brass
GQ16T-D/△/▲/N



Stainless Steel
GQ16T-D/△/▲/S



Black Plated Brass
GQ16T-D/△/▲/A



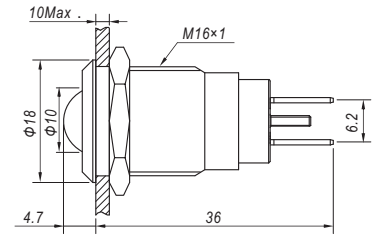
Nickel Plated Brass
GQ16G-D/△/▲/N



Stainless Steel
GQ16G-D/△/▲/S



Black Plated Brass
GQ16G-D/△/▲/A



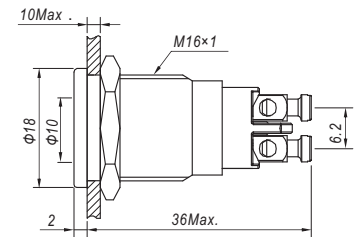
Nickel Plated Brass
GQ16T-D/L/△/▲/N



Stainless Steel
GQ16T-D/L/△/▲/S



Black Plated Brass
GQ16T-D/L/△/▲/A



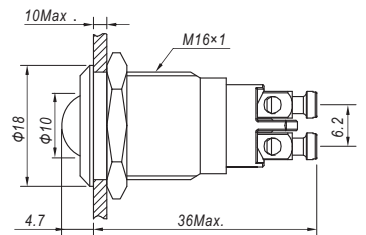
Nickel Plated Brass
GQ16G-D/L/△/▲/N



Stainless Steel
GQ16G-D/L/△/▲/S



Black Plated Brass
GQ16G-D/L/△/▲/A



- ⊙ Lamp Color(△): **R** **G** **Y** **B** **W**
- ⊙ Lamp Voltage(▲): 6V, 12V, 24V, 110V(with external resistor), 220V(with external resistor)

GQ16 Indicator Specifications

- ⊙ Mounting Hole Diameter: Φ16mm
- ⊙ Lamp type: LED
- ⊙ Rated Current: 2mA~20mA
- ⊙ Mounting Nut Torque: About 0.1Nm
- ⊙ Panel Thickness: 6mm Max.
- ⊙ Terminal: Solder Lug (2.8x0.5mm) / Screw Terminals
- ⊙ Soldering Temperature: 320°C 3s

- ⊙ Body Material: Nickel Plated Brass / Black plated Brass / Stainless Steel
- ⊙ Lens Material: Epoxy(UV resistant can be customized)
- ⊙ Base: PA
- ⊙ IP Rating: IP67; IK06(Flat round type only)
- ⊙ RoHS can be Customized



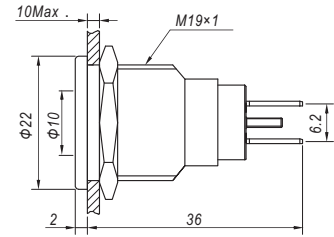
Nickel Plated Brass
GQ19T-D/Δ/▲ /N



Stainless Steel
GQ19T-D/Δ/▲ /S



Black Plated Brass
GQ19T-D/Δ/▲ /A



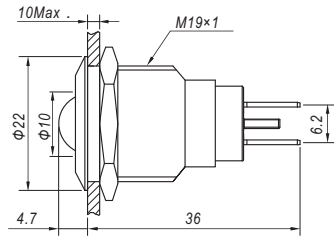
Nickel Plated Brass
GQ19G-D/Δ/▲ /N



Stainless Steel
GQ19G-D/Δ/▲ /S



Black Plated Brass
GQ19G-D/Δ/▲ /A



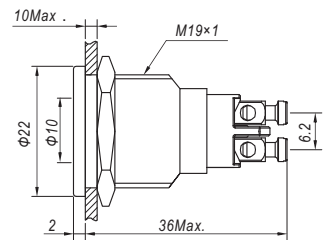
Nickel Plated Brass
GQ19T-D/L/Δ/▲ /N



Stainless Steel
GQ19T-D/L/Δ/▲ /S



Black Plated Brass
GQ19T-D/L/Δ/▲ /A



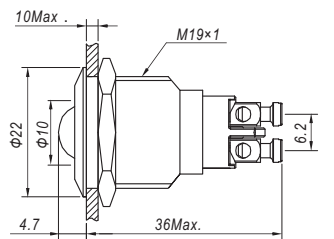
Nickel Plated Brass
GQ19G-D/L/Δ/▲ /N



Stainless Steel
GQ19G-D/L/Δ/▲ /S



Black Plated Brass
GQ19G-D/L/Δ/▲ /A



- ⊙ Lamp Color(Δ): **R** **G** **Y** **B** **W**
- ⊙ Lamp Voltage(▲): 6V, 12V, 24V, 110V(with external resistor), 220V(with external resistor)

GQ19 Indicator Specifications

- ⊙ Mounting Hole Diameter: Φ19mm
- ⊙ Lamp type: LED
- ⊙ Rated Current: 2mA~20mA
- ⊙ Mounting Nut Torque: About 0.1Nm
- ⊙ Panel Thickness: 6mm Max.
- ⊙ Terminal: Solder Lug (2.8x0.5mm) / Screw Terminals
- ⊙ Soldering Temperature: 320°C 3s

- ⊙ Body Material: Nickel Plated Brass / Black plated Brass / Stainless Steel
- ⊙ Lens Material: Epoxy(UV resistant can be customized)
- ⊙ Base: PA
- ⊙ IP Rating: IP67; IK06(Flat round type only)
- ⊙ RoHS can be Customized



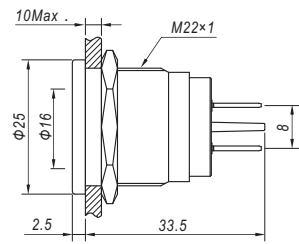
Nickel Plated Brass
GQ22T-D/△/▲/N



Stainless Steel
GQ22T-D/△/▲/S



Black Plated Brass
GQ22T-D/△/▲/A



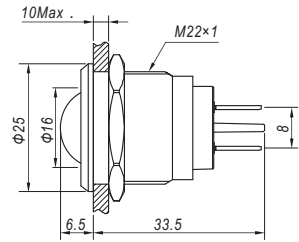
Nickel Plated Brass
GQ22G-D/△/▲/N



Stainless Steel
GQ22G-D/△/▲/S



Black Plated Brass
GQ22G-D/△/▲/A



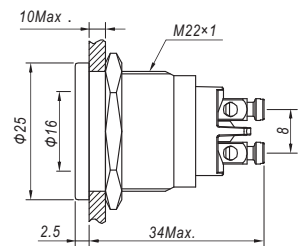
Nickel Plated Brass
GQ22T-D/L/△/▲/N



Stainless Steel
GQ22T-D/L/△/▲/S



Black Plated Brass
GQ22T-D/L/△/▲/A



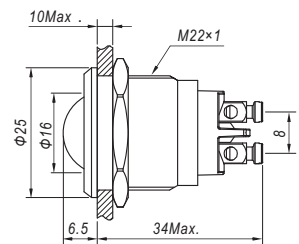
Nickel Plated Brass
GQ22G-D/L/△/▲/N



Stainless Steel
GQ22G-D/L/△/▲/S



Black Plated Brass
GQ22G-D/L/△/▲/A



- ⊙ Lamp Color(△): **R** **G** **Y** **B** **W**
- ⊙ Lamp Voltage(▲): 6V, 12V, 24V, 110V(with external resistor), 220V(with external resistor)

GQ22 Indicator Specifications

- ⊙ Mounting Hole Diameter: Φ22mm
- ⊙ Lamp type: LED
- ⊙ Rated Current: 2mA~20mA
- ⊙ Mounting Nut Torque: About 0.1Nm
- ⊙ Panel Thickness: 6mm Max.
- ⊙ Terminal: Solder Lug (2.8x0.5mm) / Screw Terminals
- ⊙ Soldering Temperature: 320°C 3s

- ⊙ Body Material: Nickel Plated Brass / Black plated Brass / Stainless Steel
- ⊙ Lens Material: Epoxy(UV resistant can be customized)
- ⊙ Base: PA
- ⊙ IP Rating: IP67; IK06(Flat round type only)
- ⊙ RoHS can be Customized



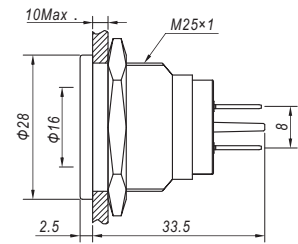
Nickel Plated Brass
GQ25T-D/Δ/▲/N



Stainless Steel
GQ25T-D/Δ/▲/S



Black Plated Brass
GQ25T-D/Δ/▲/A



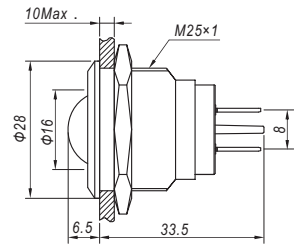
Nickel Plated Brass
GQ25G-D/Δ/▲/N



Stainless Steel
GQ25G-D/Δ/▲/S



Black Plated Brass
GQ25G-D/Δ/▲/A



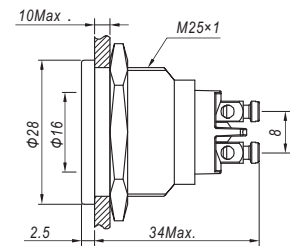
Nickel Plated Brass
GQ25T-D/L/Δ/▲/N



Stainless Steel
GQ25T-D/L/Δ/▲/S



Black Plated Brass
GQ25T-D/L/Δ/▲/A



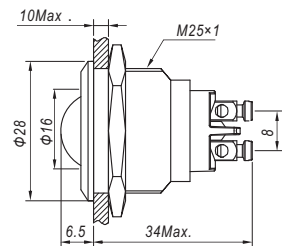
Nickel Plated Brass
GQ25G-D/L/Δ/▲/N



Stainless Steel
GQ25G-D/L/Δ/▲/S



Black Plated Brass
GQ25G-D/L/Δ/▲/A



- ⊙ Lamp Color(Δ): **R** **G** **Y** **B** **W**
- ⊙ Lamp Voltage(▲): 6V, 12V, 24V, 110V(with external resistor), 220V(with external resistor)

GQ25 Indicator Specifications

- ⊙ Mounting Hole Diameter: Φ25mm
- ⊙ Lamp type: LED
- ⊙ Rated Current: 2mA~20mA
- ⊙ Mounting Nut Torque: About 0.1Nm
- ⊙ Panel Thickness: 6mm Max.
- ⊙ Terminal: Solder Lug (2.8x0.5mm) / Screw Terminals
- ⊙ Soldering Temperature: 320°C 3s
- ⊙ Body Material: Nickel Plated Brass / Black plated Brass / Stainless Steel
- ⊙ Lens Material: Epoxy(UV resistant can be customized)
- ⊙ Base: PA
- ⊙ IP Rating: IP67; IK06(Flat round type only)
- ⊙ RoHS can be Customized