

GQ16 series

- the installation aperture is Φ 16mm;
- ☆ the switch is "self recovery | slow action | single pole single throw";
- ☆ this series is the main series of the company, which is very rich in the selection of head shape, lamp type, wiring type and shell material (refer to the details page for details);
- ☆ waterproof grade IP65/IP67.



GQ16 series model description

GQ16★- ◇/◆/△/▲/◎

Symbol	Symbol name	Specify
★	Head shape	B: spherical / F: Flat round / H: High round
	Contact Structure	10: 1NO / No digital means indicator / Some products can be customized with 1NC
◇	Illuminated Type	D: ● Dot illuminated / E: ○ Ring illuminated / ET: ◎ Ring+power symbol illuminated / No letters mean no lights
◆	Wiring type	J: Wiring patch / No letters means terminals
	Color	R: Red / G: Green / Y: Yellow / B: Blue / W: White
	Voltage	6V / 12V / 24V All have built-in resistors, other voltage levels can be customized.
	Housing Material	N: Nickel plated Brass / S: Stainless steel / A: Aluminium alloy (Black)

Note: Please read the catalog carefully, and choose the right part-number according to the sign.

Performance Characteristic

Operating Temp	-25°C~+55°C (Non freezing)
	Keep the switch air circulating well
Operating Humidity	45~85% RH(Non condensing)
Contact Resistance	≤ 50mΩ
Insulation Resistance	≥ 100MΩ (500VDC)
Max. withstanding voltage	1500VAC, 50Hz, 1min
Vibration resistance	50Hz, The amplitude is about 1.2mm
Solder heat resistance	320°C 3s
Switch rating	2A/36VDC 0.5A/220V
Mechanical Life	1,000,000 cycles
Electrical Life	50,000 cycles
Base material	PBT(Products without lights) / PA(Products with lamps)
Nut torque	About 0.6Nm
Torque	About 4N
Operation Travel	About 24mm
Protection class	IP65(IP67 can be customized),IK08

Standards and certification

Corresponding standard	Certification mark	Certification authority / certification number
GB/T 14048.5-2017	CCC	2020970305003360
UL508	cRUUS	UL/E254023
EN61058-1:2018	CE	UDEM/M.2021.206.C62197

Switch structure description

Type	Diagram	Symbol
X		
Y		

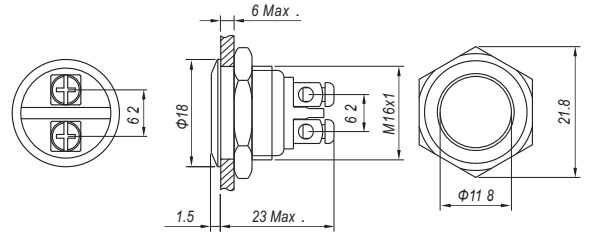
LED Specifications

LED life	Current	Allowable voltage fluctuation range	Circuit diagram
≥ 40000 hours	≤ 24V about 15mA ≥ 110V about 2mA	DC: ± 10%	 The product has built-in protective resistance, and the lamp bead wiring has no distinction between positive and negative poles.



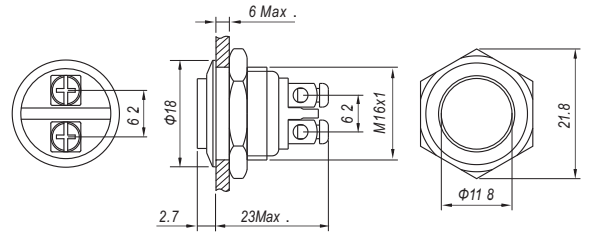
GQ16F-10/0

Contact Structure 1NO
 Operation type Momentary
 Housing Material N Nickel plated brass / S Stainless steel /
 A: Aluminium alloy (Black)
 Wiring type Terminals
 Protection class IP65, IK08
 Applicable accessories M12-16F



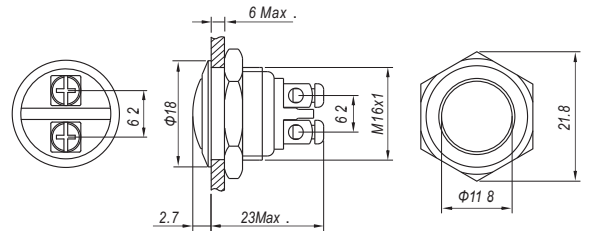
GQ16H-10/0

Contact Structure 1NO
 Operation type Momentary
 Housing Material N Nickel plated brass / S Stainless steel
 Wiring type Terminals
 Protection class IP65, IK08
 Applicable accessories M12-16H



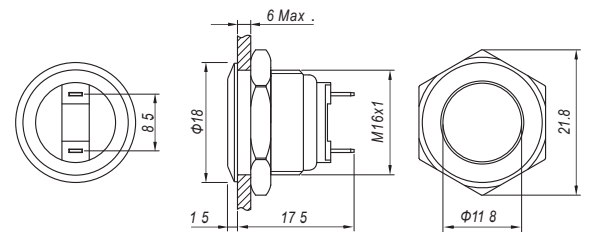
GQ16B-10/0

Contact Structure 1NO
 Operation type Momentary
 Housing Material N Nickel plated brass / S Stainless steel
 Wiring type Terminals
 Protection class IP65, IK08
 Applicable accessories M12-16H



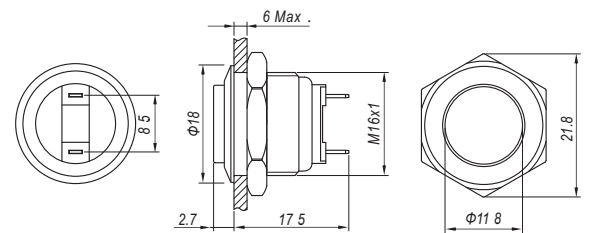
GQ16F-10/J/0

Contact Structure 1NO
 Operation type Momentary
 Housing Material N Nickel plated brass / S Stainless steel /
 A: Aluminium alloy (Black)
 Wiring type Wiring patch (2x0.5mm)
 Protection class IP65, IK08
 Applicable accessories M12-16F



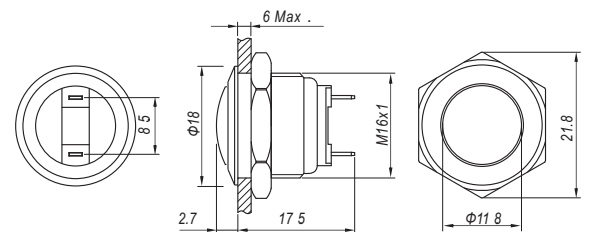
GQ16H-10/J/0

Contact Structure 1NO
 Operation type Momentary
 Housing Material N Nickel plated brass / S Stainless steel
 Wiring type Wiring patch (2x0.5mm)
 Protection class IP65, IK08
 Applicable accessories M12-16H



GQ16B-10/J/0

Contact Structure 1NO
 Operation type Momentary
 Housing Material N Nickel plated brass / S Stainless steel
 Wiring type Wiring patch (2x0.5mm)
 Protection class IP65, IK08
 Applicable accessories M12-16H



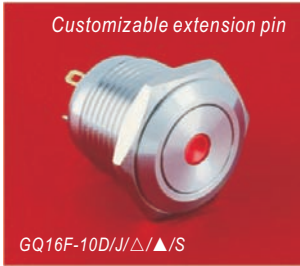
Sealing cover
M12-16F



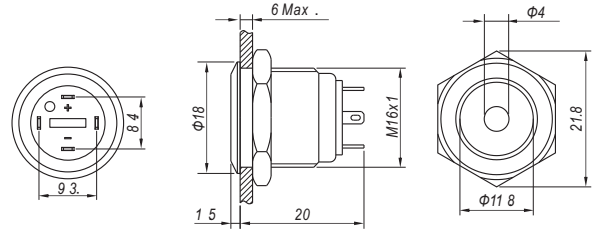
Sealing cover
M12-16H



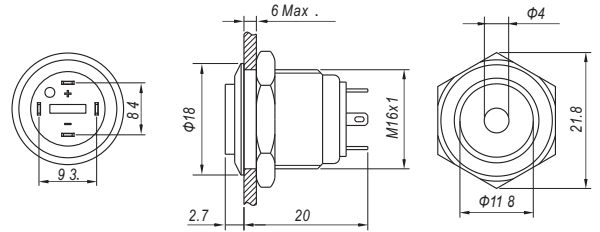
Panel plug
M01



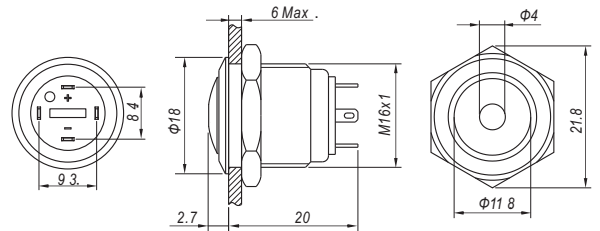
Contact Structure 1NO
 Operation type Momentary
 Color△ R G Y B W
 Voltage▲ 6V / 12V / 24V / 110V / 220V
 Housing Material Stainless steel
 Wiring type Wiring patch(2×0.5mm)
 Protection class IP65(IP67 can be customized), IK08
 Applicable accessories M12-16F



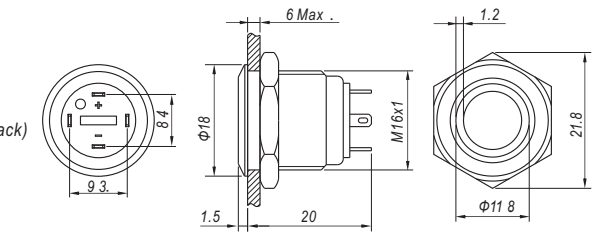
Contact Structure 1NO
 Operation type Momentary
 Color△ R G Y B W
 Voltage▲ 6V / 12V / 24V / 110V / 220V
 Housing Material Stainless steel
 Wiring type Wiring patch(2×0.5mm)
 Protection class IP65(IP67 can be customized), IK08
 Applicable accessories M12-16H



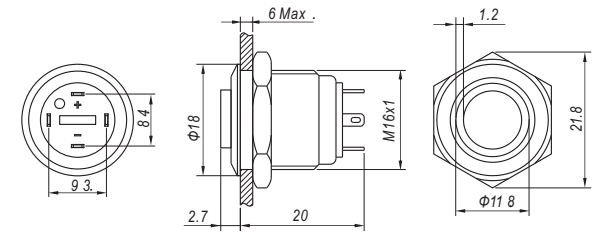
Contact Structure 1NO
 Operation type Momentary
 Color△ R G Y B W
 Voltage▲ 6V / 12V / 24V / 110V / 220V
 Housing Material Stainless steel
 Wiring type Wiring patch(2×0.5mm)
 Protection class IP65(IP67 can be customized), IK08
 Applicable accessories M12-16H



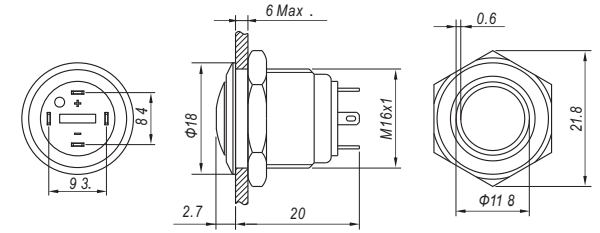
Contact Structure 1NO
 Operation type Momentary
 Color△ R G Y B W
 Voltage▲ 6V / 12V / 24V / 110V / 220V
 Housing Material S Stainless steel / A: Aluminium alloy (Black)
 Wiring type Wiring patch(2×0.5mm)
 Protection class IP65(IP67 can be customized), IK08
 Applicable accessories M12-16F



Contact Structure 1NO
 Operation type Momentary
 Color△ R G Y B W
 Voltage▲ 6V / 12V / 24V / 110V / 220V
 Housing Material Stainless steel
 Wiring type Wiring patch(2×0.5mm)
 Protection class IP65(IP67 can be customized), IK08
 Applicable accessories M12-16H



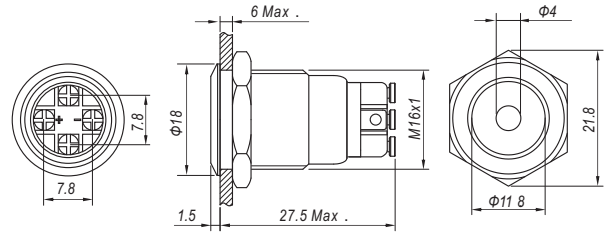
Contact Structure 1NO
 Operation type Momentary
 Color△ R G Y B W
 Voltage▲ 6V / 12V / 24V / 110V / 220V
 Housing Material Stainless steel
 Wiring type Wiring patch(2×0.5mm)
 Protection class IP65(IP67 can be customized), IK08
 Applicable accessories M12-16H





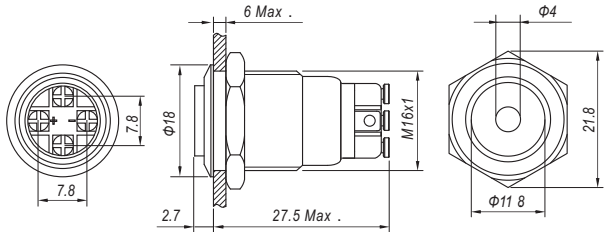
GQ16F-10D/Δ/▲/S

Contact Structure 1NO
 Operation type Momentary
 Color Δ R G Y B W
 Voltage ▲ 6V / 12V / 24V / 110V / 220V
 Housing Material Stainless steel
 Wiring type Terminals
 Protection class IP65(IP67 can be customized), IK08
 Applicable accessories M12-16F



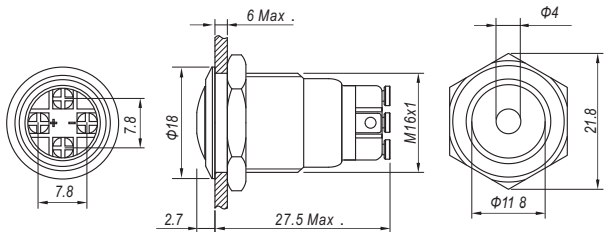
GQ16H-10D/Δ/▲/S

Contact Structure 1NO
 Operation type Momentary
 Color Δ R G Y B W
 Voltage ▲ 6V / 12V / 24V / 110V / 220V
 Housing Material Stainless steel
 Wiring type Terminals
 Protection class IP65(IP67 can be customized), IK08
 Applicable accessories M12-16H



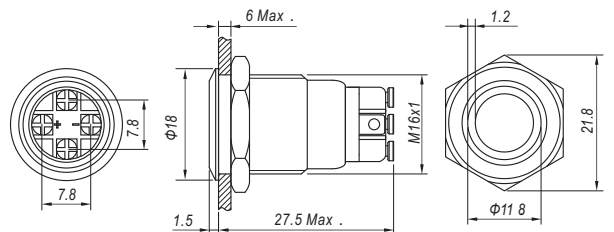
GQ16B-10D/Δ/▲/S

Contact Structure 1NO
 Operation type Momentary
 Color Δ R G Y B W
 Voltage ▲ 6V / 12V / 24V / 110V / 220V
 Housing Material Stainless steel
 Wiring type Terminals
 Protection class IP65(IP67 can be customized), IK08
 Applicable accessories M12-16H



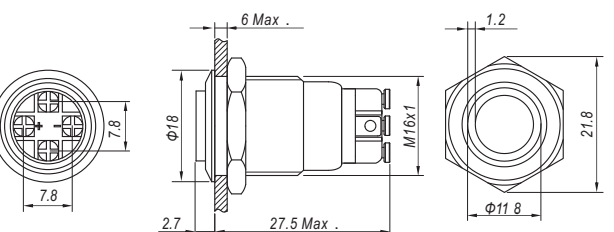
GQ16F-10E/Δ/▲/S

Contact Structure 1NO
 Operation type Momentary
 Color Δ R G Y B W
 Voltage ▲ 6V / 12V / 24V / 110V / 220V
 Housing Material Stainless steel
 Wiring type Terminals
 Protection class IP65(IP67 can be customized), IK08
 Applicable accessories M12-16F



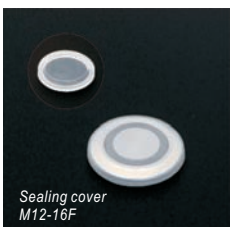
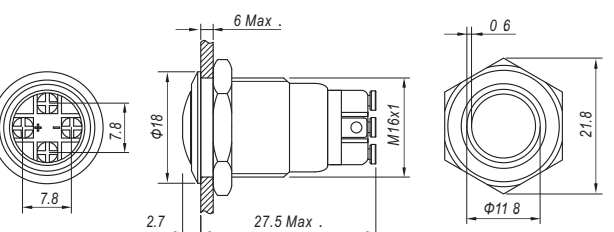
GQ16H-10E/Δ/▲/S

Contact Structure 1NO
 Operation type Momentary
 Color Δ R G Y B W
 Voltage ▲ 6V / 12V / 24V / 110V / 220V
 Housing Material Stainless steel
 Wiring type Terminals
 Protection class IP65(IP67 can be customized), IK08
 Applicable accessories M12-16H



GQ16B-10E/Δ/▲/S

Contact Structure 1NO
 Operation type Momentary
 Color Δ R G Y B W
 Voltage ▲ 6V / 12V / 24V / 110V / 220V
 Housing Material Stainless steel
 Wiring type Terminals
 Protection class IP65(IP67 can be customized), IK08
 Applicable accessories M12-16H



Sealing cover
M12-16F



Sealing cover
M12-16H

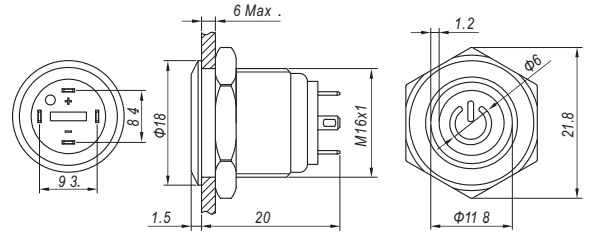


Panel plug
M01



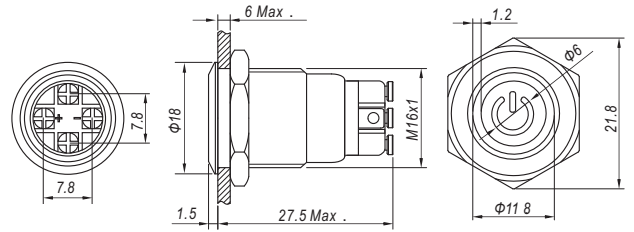
GQ16F-10ET/J/Δ/▲/S

Contact Structure 1NO
 Operation type Momentary
 Color Δ R G Y B W
 Voltage ▲ 6V / 12V / 24V / 110V / 220V
 Housing Material Stainless steel
 Wiring type Wiring patch (2 × 0.5mm)
 Protection class IP65 (IP67 can be customized), IK08
 Applicable accessories M12-16F



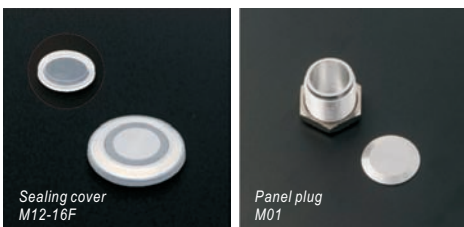
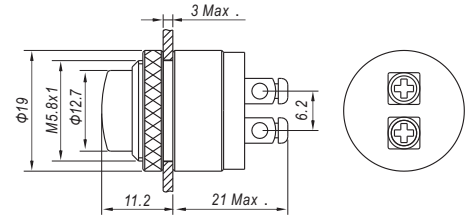
GQ16F-10ET/Δ/▲/S

Contact Structure 1NO
 Operation type Momentary
 Color Δ R G Y B W
 Voltage ▲ 6V / 12V / 24V / 110V / 220V
 Housing Material Stainless steel
 Wiring type Terminals
 Protection class IP65 (IP67 can be customized), IK08
 Applicable accessories M12-16F



GQ16M-10

Switch rating 0.2A / 24V
 Contact Structure 1NO
 Operation type Momentary
 Housing Material brass
 Wiring type Terminals
 Protection class IP65, IK08



Sealing cover
M12-16F

Panel plug
M01